



Panorama Apartments, Uxbridge, UB8 1GW
£325,000

1 1 1 B



Panorama Apartments, Uxbridge, UB8 1GW

£325,000

- Large And Spacious One Bedroom Penthouse
- Dedicated Soundproofed Home Office (Rare Feature)
- Uxbridge Town Centre Location
- Luxury Finish Throughout
- Landmark Building
- Private Balcony
- Lift To All Floors
- 0.2 Miles to Uxbridge Station
- Residents Roof Garden
- No Upper Chain

Description

Set within the sought after Panorama development in the heart of Uxbridge, this beautifully presented one bedroom penthouse offers an elevated standard of living.

Flooded with natural light, the open plan living and dining space is designed for both relaxation and entertaining. Floor to ceiling glazing draws your eye outward to panoramic views, while the private balcony provides the perfect setting for morning coffee or evening unwinding above the skyline.

The property comprises a fitted kitchen, seamlessly designed for both practicality and modern living. The bright and spacious reception room provides an inviting space for relaxation and entertaining, further complemented by a dedicated study area. A well-proportioned double bedroom and a modern bathroom.

Externally, residents can enjoy a private roof terrace and a secure entry phone system.

A rare opportunity to secure a penthouse that seamlessly blends luxury living with true work from home functionality, early viewing is highly recommended.

Situation

Panorama is perfectly positioned just moments from Uxbridge town centre offering immediate access to shops, restaurants and bars while remaining a peaceful retreat above it all.

Just a few minutes walk from Uxbridge station with its metropolitan and Piccadilly line services to the heart of the capital. Baker Street can be reached in as little as 36 minutes. Air travellers will appreciate the close proximity of Heathrow, less than 6 miles away, while the A40, M40 and M25 are just a few minutes drive away.

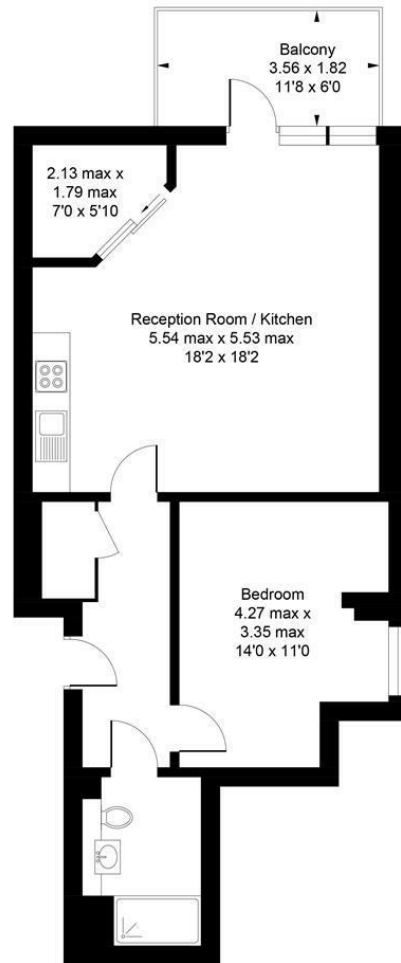


Floor Plans

Panorama Apartments, Harefield Road, Uxbridge, UB8

Approximate Area = 624 sq ft / 58.0 sq m

For identification only - Not to scale

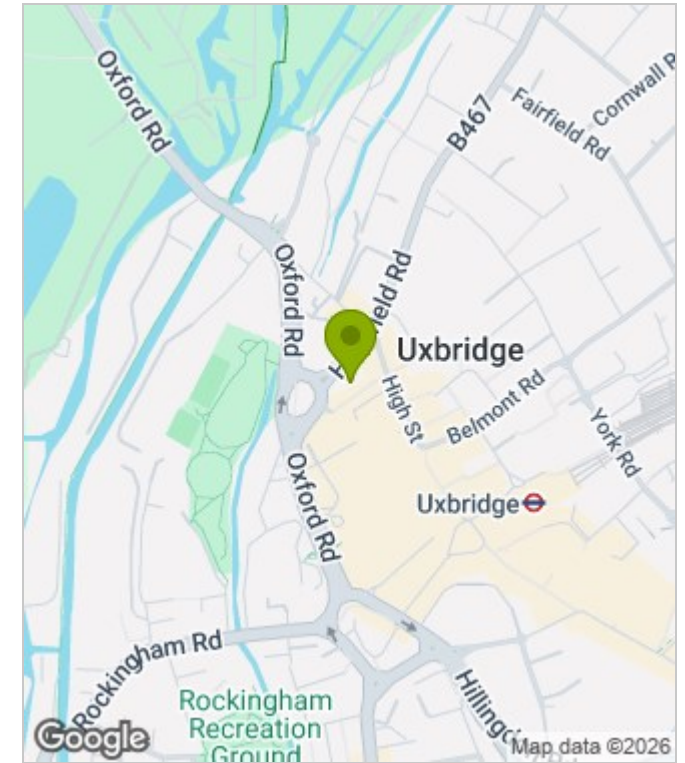


Fifth Floor

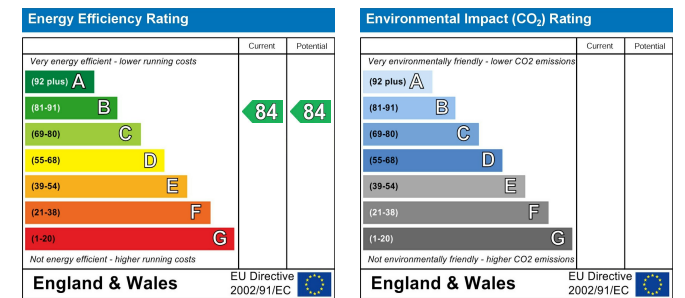
Floor plan produced in accordance with RICS Property Measurement Standards incorporating International Property Measurement Standards (IPMS2 Residential). ©Vizion Property Marketing 2026. Produced for Allday & Miller.

ALLDAY & MILLER
estate agents

Area Map



Energy Performance Graph



These particulars, whilst believed to be accurate are set out as a general outline only for guidance and do not constitute any part of an offer or contract. Intending purchasers should not rely on them as statements of representation of fact, but must satisfy themselves by inspection or otherwise as to their accuracy. No person in this firm's employment has the authority to make or give any representation or warranty in respect of the property.

www.alldayandmiller.co.uk

192 High Street, Uxbridge, Middlesex, UB8 1LB

T: 01895 641 000 | E: sales@alldayandmiller.co.uk

T: 01895 379 549 | E: lettings@alldayandmiller.co.uk